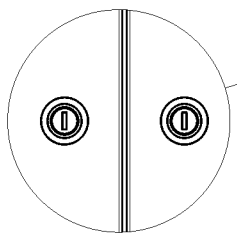
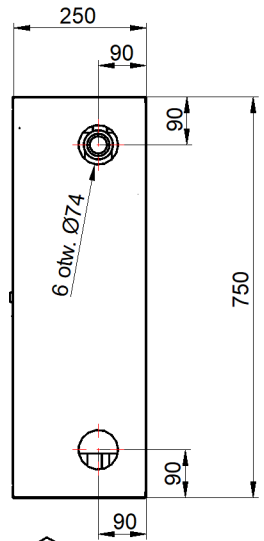
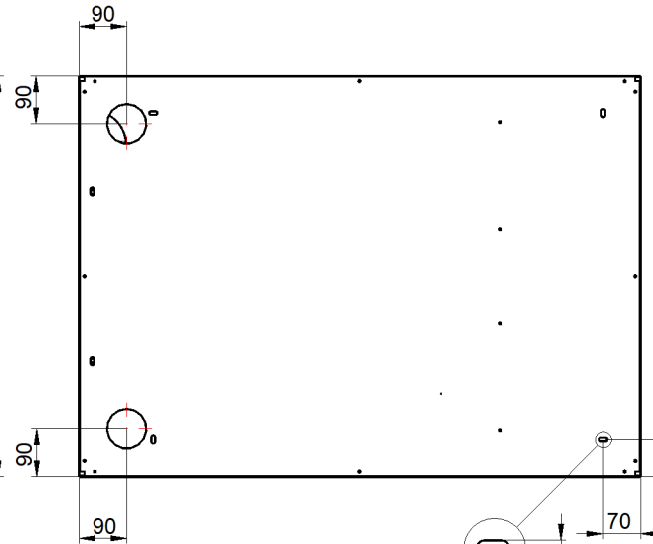
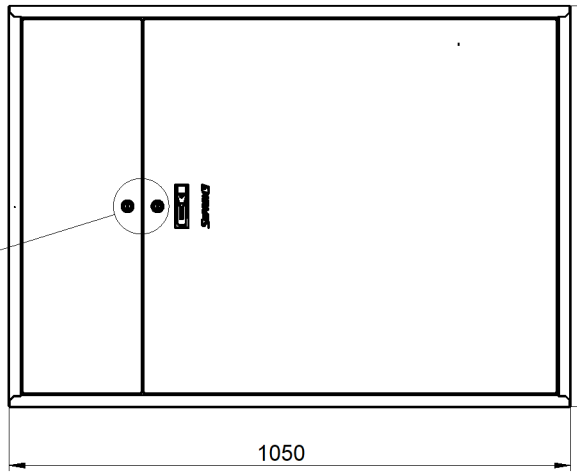
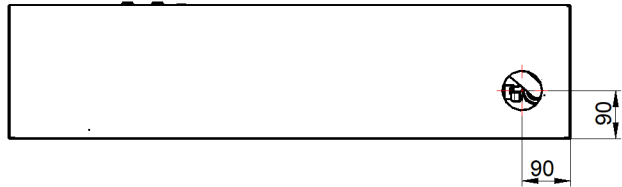


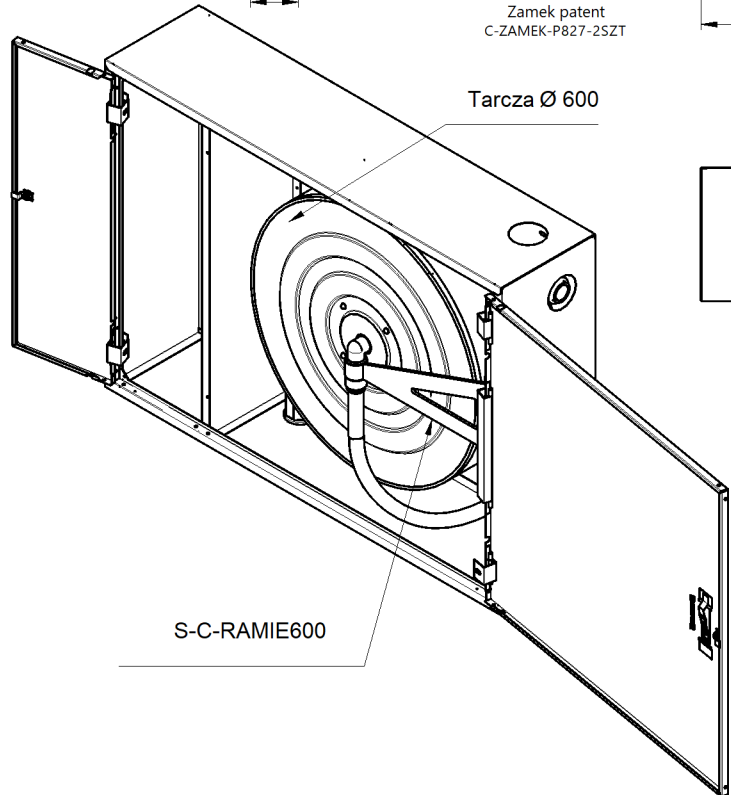
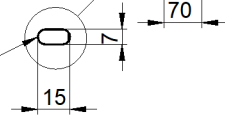
This document and its contents are the exclusive property of PPUH "Supron 3" Spółka z o.o., and may not be copied, reproduced, transmitted or communicated to a third part, or used for any purpose without written permission.



Zamek patent
C-ZAMEK-P827-2SZT

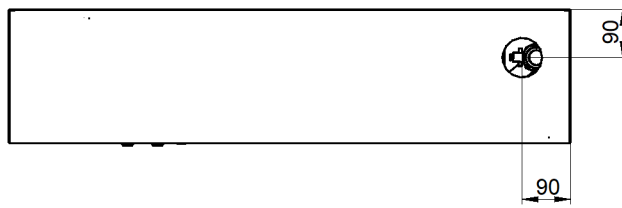


x4 szt.



Tarcza Ø 600

S-C-RAMIE600



Nazwa i/lub logo przedsiębiorstwa:		Nazwa rysunku:		
		S-33-ZG20-P-XXXX		
		S-33-ZG30-P-XXXX		Arkusz: 1/1
Numer rysunku:		PN-EN 671-(Z-33/20G)		
		PN-EN 671-(Z-33/30G)		