

## METAL SHELF



Universal, industrial-style metal shelf for any interior.

NEW!

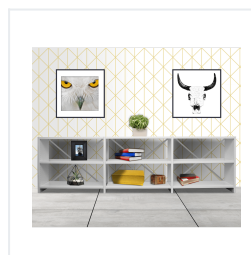
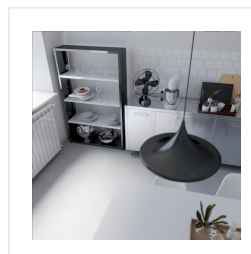
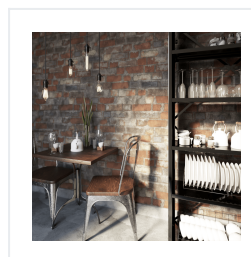
### Standard execution:

- shelf unit is made of 0.8 mm thick steel sheet
- lacquered with [Facade type polyester powder paint](#) in RAL 9003 (white)
- shelf loading up to 75 kg with an even distribution

Shelf unit is sold in segments. There are three shelving heights, each has a standard number of shelves (see table). You can order additional shelves. Each shelf unit is equipped with hooks to attach it to the wall. It is possible to use one side wall as common for two segments, eg: single-segment rack – 2 side walls, two-segment rack – 3 side walls, three-segment rack – 4 side walls, etc., which reduces the purchase costs.

	Metal shelf 0,8 m	Metal shelf 1,2 m	Metal shelf 1,6 m	Metal shelf 2,0 m
Height of the side wall [mm]	833	1223	1613	2003
Width [mm]	1000	1000	1000	1000
Depth of shelf [mm]	300	300	300	300
Width of shelf [mm]	940	940	940	940
Number of shelves	3	4	5	6
Distance between shelves [mm]	adjustable	adjustable	adjustable	adjustable

**ATTENTION!** Each shelf unit must be set in a way that guarantees stability.

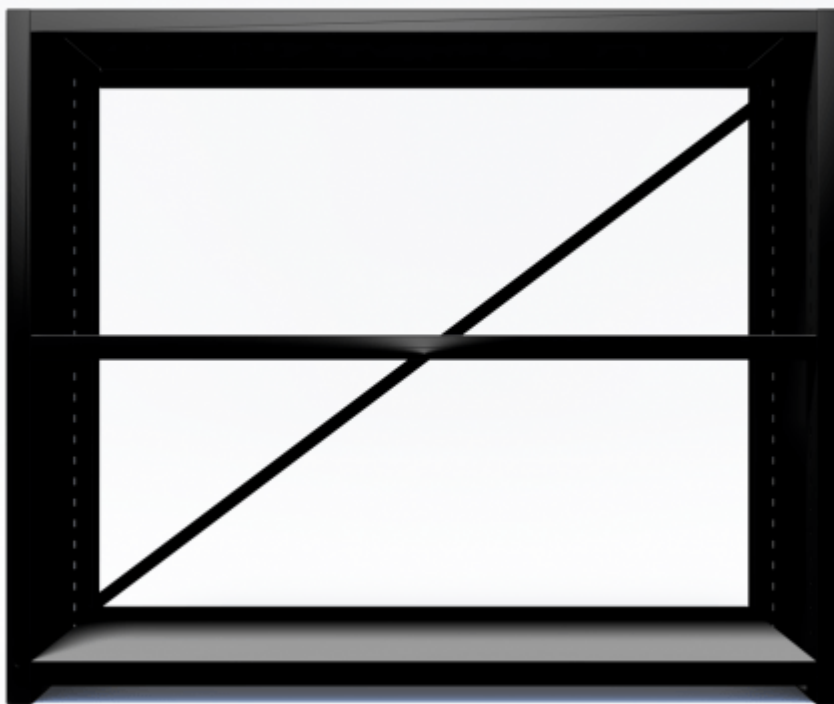




Metal shelf in the interior



Metal shelf – white, 0.8 m



Metal shelf – black, 0.8 m



Metal shelf in the interior



Metal shelf – white, 0.8 + 1.2 m



Metal shelf – black, 0.8 + 1.2 m



Metal shelf in the interior





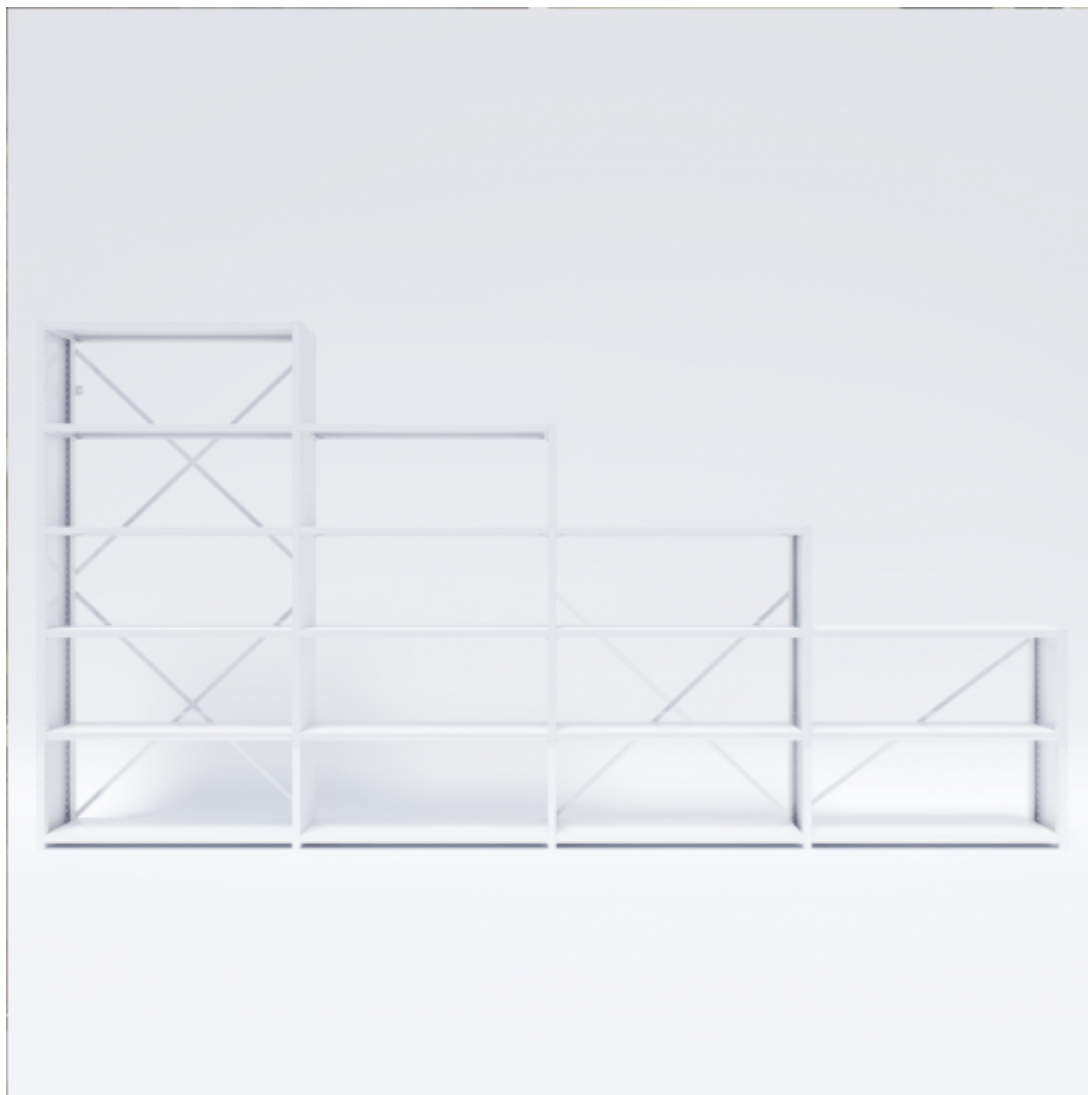
Metal shelf – white, 0.8 + 1.2 + 1.6 m



Metal shelf – black, 0.8 + 1.2 + 1.6 m



Metal shelf in the interior



Metal shelf – white, 0.8 + 1.2 + 1.6 + 2.0 m



Metal shelf – black, 0.8 + 1.2 + 1.6 + 2.0 m

## POSSIBILITY OF IMPLEMENTATION





**INDIVIDUAL COLOR**

Any color from RAL pallet

**SHEET THICKNESS**

Made of thicker steel sheet increases the load capacity of the shelves